

アンダー・ザ・シー
Under the Sea

Piano (Full Score)

♩=100

Cello

Cello
(Option for Duet)

Piano

f

B \flat F7 F

5

mf

2nd time only

B \flat B \flat

mf

F7 B \flat F7 B \flat

15

① B

mf

F7 B \flat ① E \flat

This system contains measures 15 through 18. It features a grand staff with a bass clef on the left and a treble clef on the right. Measure 15 starts with a bass clef staff containing a whole rest followed by a quarter note G2, a quarter note F2, and a quarter note E2. The treble clef staff has a whole rest. Measure 16 continues with a quarter note D2, a quarter note C2, and a quarter note B1 in the bass clef, and a whole note G1 in the treble. Measure 17 has a quarter note A1, a quarter note G1, and a quarter note F1 in the bass clef, and a whole note F1 in the treble. Measure 18 has a quarter note E1, a quarter note D1, and a quarter note C1 in the bass clef, and a whole note E1 in the treble. A circled 'B' is above measure 18. A dynamic marking 'mf' is below measure 18. Chord symbols F7, B \flat , and ① E \flat are placed above the treble clef staff.

19

F7 B \flat

This system contains measures 19 through 23. Measures 19-21 are in the grand staff. Measure 19: Bass clef has a whole rest, quarter note G2, quarter note F2, quarter note E2; Treble clef has a whole rest. Measure 20: Bass clef has a whole rest, quarter note D2, quarter note C2, quarter note B1; Treble clef has a whole note G1. Measure 21: Bass clef has a whole rest, quarter note A1, quarter note G1, quarter note F1; Treble clef has a whole note F1. Measure 22: Bass clef has a whole rest, quarter note E1, quarter note D1, quarter note C1; Treble clef has a whole note E1. Measure 23: Bass clef has a whole rest, quarter note B1, quarter note A1, quarter note G1; Treble clef has a whole note D1. Chord symbols F7 and B \flat are placed above the treble clef staff.

24

B \flat B \flat

This system contains measures 24 through 27. Measures 24-25 are in the grand staff. Measure 24: Bass clef has a whole note G2, F2, E2; Treble clef has a whole rest. Measure 25: Bass clef has a whole note D2, C2, B1; Treble clef has a whole rest. Measure 26: Bass clef has a whole note A1, G1, F1; Treble clef has a whole rest. Measure 27: Bass clef has a whole note E1, D1, C1; Treble clef has a whole rest. Chord symbols B \flat and B \flat are placed above the treble clef staff.

E \flat F7 B \flat

This system contains measures 28 through 31. Measures 28-30 are in the grand staff. Measure 28: Bass clef has a whole note G2, F2, E2; Treble clef has a whole rest. Measure 29: Bass clef has a whole note D2, C2, B1; Treble clef has a whole rest. Measure 30: Bass clef has a whole note A1, G1, F1; Treble clef has a whole rest. Measure 31: Bass clef has a whole note E1, D1, C1; Treble clef has a whole rest. Chord symbols E \flat , F7, and B \flat are placed above the treble clef staff.

アンダー・ザ・シー
Under the Sea

Cello

$\text{♩} = 100$

8 **(A)**

mf

13

18

23

29

34 **(D)**

39 **(E)**

47

(G)

mf

アンダー・ザ・シー
Under the Sea

Cello (Option for Duet)

$\text{♩} = 100$

8 (A) 2nd time only
mf

13

19

26 (C)

31

38

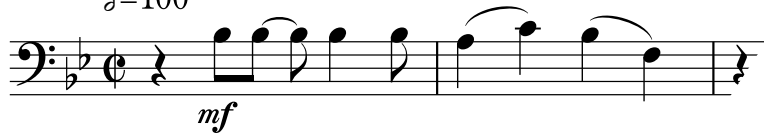
45 (E)

(F)

アンダー・ザ・シー
Under the Sea

チェロ ショートソロ
(伴奏なし)

♩=100



5



9 (A)



13



17



22

