

「名探偵コナン」メイン・テ

Piano (Full Score)

Flute

Flute (Option for Duet)

Piano

♩=112

Dm9 DmM9

B♭6

Em7

F7 B♭M9 B♭6

C7 F6 F Em⁻⁵ A7

The image shows a musical score for the main theme of 'Detective Conan'. It includes parts for Flute and Piano. The tempo is marked as ♩=112. The key signature has one flat (B-flat major). The score is divided into systems. The first system shows the Flute and Piano parts. The Piano part starts with a mezzo-forte (mf) dynamic. The second system continues the Piano part with a mezzo-forte (mf) dynamic. The third system continues the Piano part with a mezzo-forte (mf) dynamic. The fourth system continues the Piano part with a mezzo-forte (mf) dynamic. The fifth system continues the Piano part with a mezzo-forte (mf) dynamic. The sixth system continues the Piano part with a mezzo-forte (mf) dynamic. The seventh system continues the Piano part with a mezzo-forte (mf) dynamic. The eighth system continues the Piano part with a mezzo-forte (mf) dynamic. The ninth system continues the Piano part with a mezzo-forte (mf) dynamic. The tenth system continues the Piano part with a mezzo-forte (mf) dynamic. The eleventh system continues the Piano part with a mezzo-forte (mf) dynamic. The twelfth system continues the Piano part with a mezzo-forte (mf) dynamic. The thirteenth system continues the Piano part with a mezzo-forte (mf) dynamic. The fourteenth system continues the Piano part with a mezzo-forte (mf) dynamic. The fifteenth system continues the Piano part with a mezzo-forte (mf) dynamic. The sixteenth system continues the Piano part with a mezzo-forte (mf) dynamic. The seventeenth system continues the Piano part with a mezzo-forte (mf) dynamic. The eighteenth system continues the Piano part with a mezzo-forte (mf) dynamic. The nineteenth system continues the Piano part with a mezzo-forte (mf) dynamic. The twentieth system continues the Piano part with a mezzo-forte (mf) dynamic. The twenty-first system continues the Piano part with a mezzo-forte (mf) dynamic. The twenty-second system continues the Piano part with a mezzo-forte (mf) dynamic. The twenty-third system continues the Piano part with a mezzo-forte (mf) dynamic. The twenty-fourth system continues the Piano part with a mezzo-forte (mf) dynamic. The twenty-fifth system continues the Piano part with a mezzo-forte (mf) dynamic. The twenty-sixth system continues the Piano part with a mezzo-forte (mf) dynamic. The twenty-seventh system continues the Piano part with a mezzo-forte (mf) dynamic. The twenty-eighth system continues the Piano part with a mezzo-forte (mf) dynamic. The twenty-ninth system continues the Piano part with a mezzo-forte (mf) dynamic. The thirtieth system continues the Piano part with a mezzo-forte (mf) dynamic. The thirty-first system continues the Piano part with a mezzo-forte (mf) dynamic. The thirty-second system continues the Piano part with a mezzo-forte (mf) dynamic. The thirty-third system continues the Piano part with a mezzo-forte (mf) dynamic. The thirty-fourth system continues the Piano part with a mezzo-forte (mf) dynamic. The thirty-fifth system continues the Piano part with a mezzo-forte (mf) dynamic. The thirty-sixth system continues the Piano part with a mezzo-forte (mf) dynamic. The thirty-seventh system continues the Piano part with a mezzo-forte (mf) dynamic. The thirty-eighth system continues the Piano part with a mezzo-forte (mf) dynamic. The thirty-ninth system continues the Piano part with a mezzo-forte (mf) dynamic. The fortieth system continues the Piano part with a mezzo-forte (mf) dynamic. The forty-first system continues the Piano part with a mezzo-forte (mf) dynamic. The forty-second system continues the Piano part with a mezzo-forte (mf) dynamic. The forty-third system continues the Piano part with a mezzo-forte (mf) dynamic. The forty-fourth system continues the Piano part with a mezzo-forte (mf) dynamic. The forty-fifth system continues the Piano part with a mezzo-forte (mf) dynamic. The forty-sixth system continues the Piano part with a mezzo-forte (mf) dynamic. The forty-seventh system continues the Piano part with a mezzo-forte (mf) dynamic. The forty-eighth system continues the Piano part with a mezzo-forte (mf) dynamic. The forty-ninth system continues the Piano part with a mezzo-forte (mf) dynamic. The fiftieth system continues the Piano part with a mezzo-forte (mf) dynamic. The fifty-first system continues the Piano part with a mezzo-forte (mf) dynamic. The fifty-second system continues the Piano part with a mezzo-forte (mf) dynamic. The fifty-third system continues the Piano part with a mezzo-forte (mf) dynamic. The fifty-fourth system continues the Piano part with a mezzo-forte (mf) dynamic. The fifty-fifth system continues the Piano part with a mezzo-forte (mf) dynamic. The fifty-sixth system continues the Piano part with a mezzo-forte (mf) dynamic. The fifty-seventh system continues the Piano part with a mezzo-forte (mf) dynamic. The fifty-eighth system continues the Piano part with a mezzo-forte (mf) dynamic. The fifty-ninth system continues the Piano part with a mezzo-forte (mf) dynamic. The sixtieth system continues the Piano part with a mezzo-forte (mf) dynamic. The sixty-first system continues the Piano part with a mezzo-forte (mf) dynamic. The sixty-second system continues the Piano part with a mezzo-forte (mf) dynamic. The sixty-third system continues the Piano part with a mezzo-forte (mf) dynamic. The sixty-fourth system continues the Piano part with a mezzo-forte (mf) dynamic. The sixty-fifth system continues the Piano part with a mezzo-forte (mf) dynamic. The sixty-sixth system continues the Piano part with a mezzo-forte (mf) dynamic. The sixty-seventh system continues the Piano part with a mezzo-forte (mf) dynamic. The sixty-eighth system continues the Piano part with a mezzo-forte (mf) dynamic. The sixty-ninth system continues the Piano part with a mezzo-forte (mf) dynamic. The seventieth system continues the Piano part with a mezzo-forte (mf) dynamic. The seventy-first system continues the Piano part with a mezzo-forte (mf) dynamic. The seventy-second system continues the Piano part with a mezzo-forte (mf) dynamic. The seventy-third system continues the Piano part with a mezzo-forte (mf) dynamic. The seventy-fourth system continues the Piano part with a mezzo-forte (mf) dynamic. The seventy-fifth system continues the Piano part with a mezzo-forte (mf) dynamic. The seventy-sixth system continues the Piano part with a mezzo-forte (mf) dynamic. The seventy-seventh system continues the Piano part with a mezzo-forte (mf) dynamic. The seventy-eighth system continues the Piano part with a mezzo-forte (mf) dynamic. The seventy-ninth system continues the Piano part with a mezzo-forte (mf) dynamic. The eightieth system continues the Piano part with a mezzo-forte (mf) dynamic. The eighty-first system continues the Piano part with a mezzo-forte (mf) dynamic. The eighty-second system continues the Piano part with a mezzo-forte (mf) dynamic. The eighty-third system continues the Piano part with a mezzo-forte (mf) dynamic. The eighty-fourth system continues the Piano part with a mezzo-forte (mf) dynamic. The eighty-fifth system continues the Piano part with a mezzo-forte (mf) dynamic. The eighty-sixth system continues the Piano part with a mezzo-forte (mf) dynamic. The eighty-seventh system continues the Piano part with a mezzo-forte (mf) dynamic. The eighty-eighth system continues the Piano part with a mezzo-forte (mf) dynamic. The eighty-ninth system continues the Piano part with a mezzo-forte (mf) dynamic. The ninetieth system continues the Piano part with a mezzo-forte (mf) dynamic. The hundredth system continues the Piano part with a mezzo-forte (mf) dynamic.

13

Dm Gm7 C7⁻⁹ F

17

mp (4)

D7 Dm7 C7 A7

21

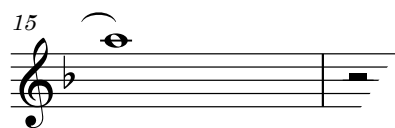
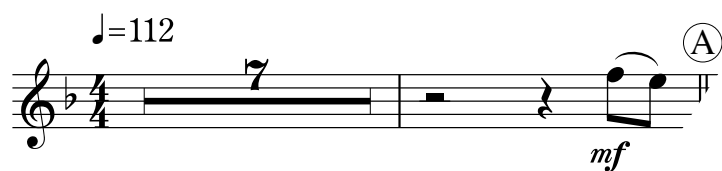
D7 (4)

Em⁻⁵ A7 f

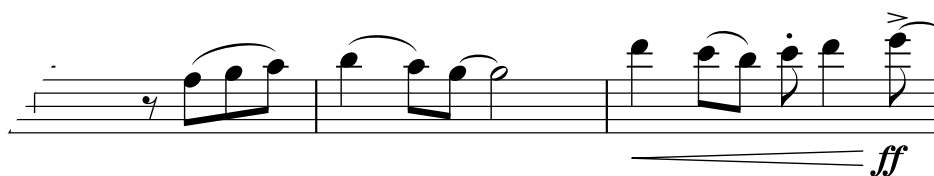
B^b F Gm7

「名探偵コナン」メイン・テーマ

Flute



23



「名探偵コナン」メイン・テ

Flute (Option for Duet)

♩=112

4

mp

9 (A) 8 (B)

mp

21

26

31

37 1

47

3

mp

ff

「名探偵コナン」メイン・テーマ

フルート ショートソロ
(伴奏なし)

♩=112 (A)

mf

5

9 (B)

13

17 (C)

21

25 (D)

f