

# Lemon

## Piano (Full Score)

Trumpet in B $\flat$   
Trumpet in B $\flat$   
(Option for Duet)

$\text{♩} = 88$  ( $\text{♪} = \text{♪} = \text{♪}$ )

*mf*

Piano

$\text{♩} = 88$  ( $\text{♪} = \text{♪} = \text{♪}$ )

Dm C

*mf*

4

G#o

B $\flat$  F

C F

10 (A)

*mf*

Dm7 C B $\flat$  F B $\flat$

14

Dm C B $\flat$  Dm

18 (B)

(B) Gm7

*f*

*f*

*f*

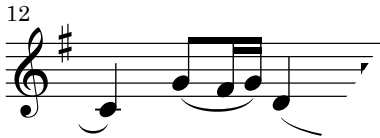
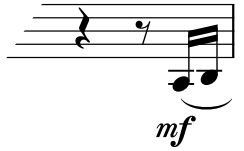
B $\flat$  C7 F B $\flat$  F

F C A7 B $\flat$  F

# Lemon

Trumpet in B $\flat$

$\text{♩} = 88$  ( $\text{♪} = \text{♪}^{\frac{3}{4}}$ )



# Lemon

Trumpet in B $\flat$   
(Option for Duet)

$\text{♩} = 88$  ( $\text{♪} = \text{♪}^{\#}$ )

9 **(A)** *mf*

13

17 **(B)** 3

23

27 1

32 **(D)** 4

40

45 ( $\text{♪} = \text{♪}^{\#}$ ) **(G)** *f*

5' 2 *rit.*



# Lemon

トランペット ショートソロ  
(伴奏なし)

♩=88 (♩=♩♯)

*mf*

4

7

11

*cresc.*

15

19